

# A-DESB03 Double Ended Shear Beam load cell



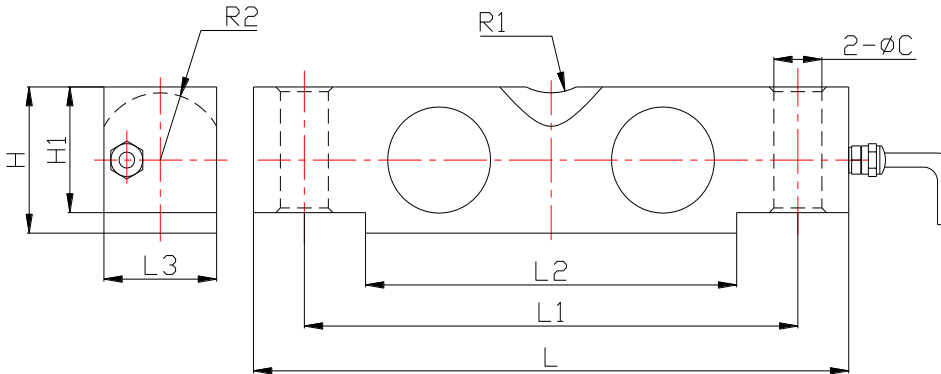
## Description

A-DESB03 double ended shear beam load cell have cambered surface loading, high precision and high reliability. It's easy to install and change.

## Applications

- Railway scale
- Truck scale
- Axle wheel scale
- Floor scale
- Warehouse scale

## Main Dimensions and Accessories(mm)



Size/mm	Capacity		
	10-25klb	40klb	50-75klb
L	196.9	260.4	260.4
L1	165.1	215.9	215.9
L2	125.1	162.4	162.4
L3	42.9	49.3	62
H	49.3	62	74.7
H1	43.2	53.3	67.3
R1	19.1	25.4	25.4

<b>R2</b>	22.9	28.5	34.8
<b>ΦC</b>	17.3	21	27

## Specifications

Capacity	10~75klb	Input resistance	750±10Ω
Rated output	3.0mV/V±0.1%	Output resistance	702±3Ω
Total error	0.03,C3	Safe overload	150%F.S
Creep in 30 minutes	<±0.02%F.S	Ultimate overload	200%F.S
Temperature effect span	<±0.02%F.S/10°C	Excitation voltage	10V AC/DC
Temperature effect zero	<±0.02%F.S/10°C	Maximum excitation voltage	15V AC/DC
Compensated temperature range	-10~+40°C	Insulation resistance	≥5000MΩ
Operating temperature range	-30~+70°C	Environmental protection	IP68
Zero balance	±1%F.S	Material	Allow steel

Cable: 10m@10,20,25,40klb; 16m@50,60,75klb

Wring: +Exc (Red) ; -Exc (Black); +Sig (Green); -Sig (White)