

A-SBT01 Shear Beam load cell



Description

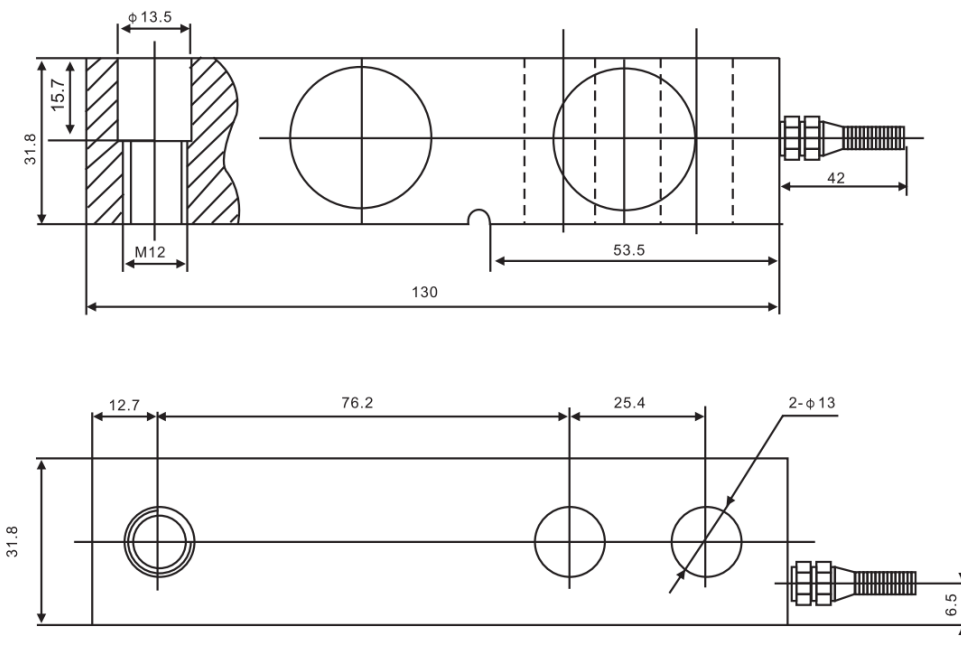
A-SBT01 shear beam load cell have good cost-effective, it is one end fixed, diverse loading and good seal structure, laser welding, self-centering, simple to install, easy to use and have good interchangeability. Alloy steel and stainless steel available.

Applications

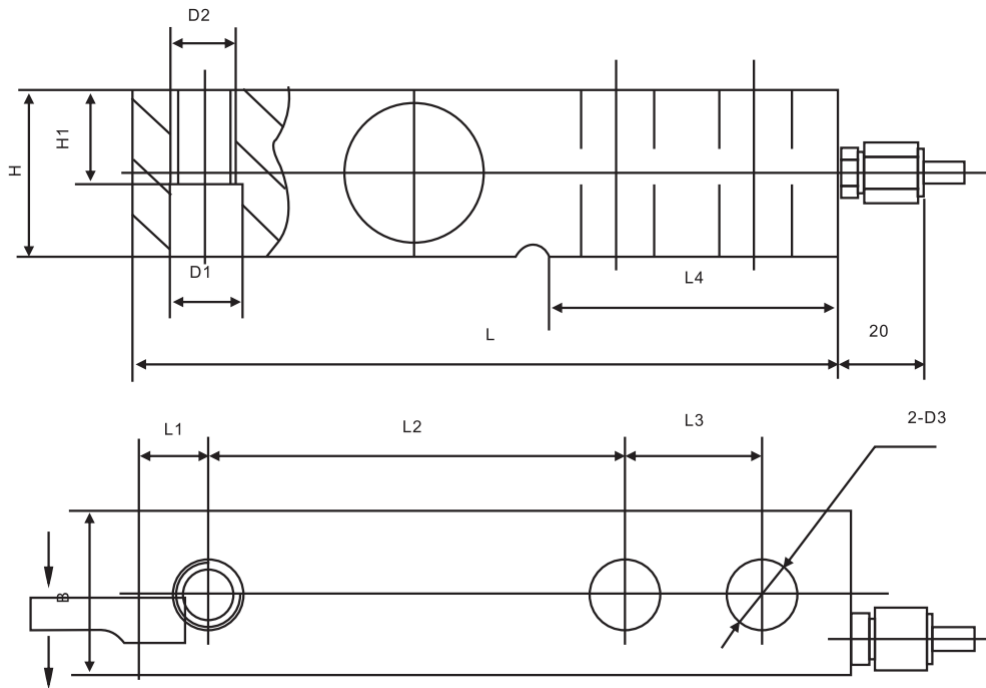
- Low profile platforms
- Pallet truck weighing
- Tank and silo weighing
- Harsh environment weighing
- Food industry weighing

Main Dimensions and Accessories(mm)

250~2500kg



3~10 ton



Cap(t)	L	L1	L2	L3	L4	H/B	H1	D1	D2	D3
3, 5	171.5	19	95.3	38.1	72.5	38.1	26	Φ20	M18	Φ20
7.5~10	225.5	25.3	124	50.8	102	50.8	25.4	Φ27	M24	Φ27

Specifications

Capacity	0.25~10 ton	Zero balance	±1%F.S
Rated output	2.0 mV/V or 3.0mV/V±0.1%	Input resistance	400±20Ω
Accuracy class	C3	Output resistance	350±5Ω
Non-linearity	0.02, 0.05%F.S	Safe overload	150%F.S
Hysteresis	0.02, 0.05%F.S	Ultimate overload	180%F.S
Creep in 30 minutes	0.02, 0.05%F.S	Excitation voltage	10V AC/DC
Temperature effect span	0.02%F.S/10℃	Maximum excitation voltage	15V AC/DC
Temperature effect zero	0.02%F.S/10℃	Insulation resistance	≥5000MΩ
Compensated temperature range	-10~+40℃	Environmental protection	IP67
Operating temperature range	-30~+70℃	Material	Stainless steel

Capacity: 250; 300; 500; 750; 1000; 1500; 2000; 2500; 3000; 5000; 7500; 10000kg

Cable: 3~5m

Wring: +Exc (Red); -Exc (Black); +Sig (Green); -Sig (White)