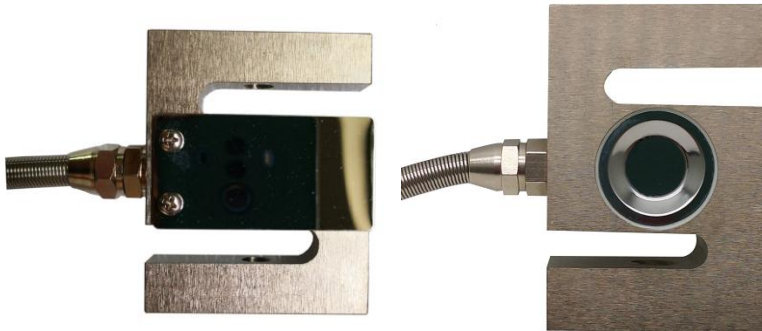


# A-ST01 S Type tension load cell



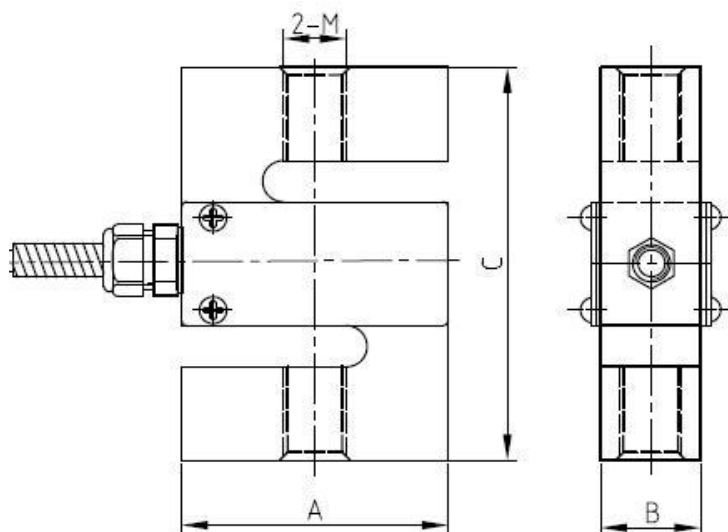
## Description

The S-type load cell, as the name indicates, can be easily identified by S-shaped body. They can be loaded either in tension or compression, and used for single or multiple-cell application if the output is rationalized

## Application

- Electro-mechanical conversion scales
- Silo/hopper/tank weighing
- Crane scales
- Fork-lift scales
- Dosing/filling
- Universal material tester
- Tensile/pulling force measurement

## Main Dimensions and Accessories(mm)



Capacity	Size(mm)			
	A	B	C	M
10~50	50.8	12.7	63	M8×1.25
100~500	50.8	19	76.2	M12×1.75
1000	50.8	25.4	76.2	M12×1.75
2000	50.8	25.4	76.2	M16×2.0
3000~5000	76.2	25.4	108	M18×1.5

## Specifications

Capacity	0.01~5t	Zero balance	±1%F.S
Rated output	2.0, 3.0mV/V±0.1%	Input resistance	380±10Ω
Accuracy class	0.03,0.05	Output resistance	350±5Ω
Non-linearity	0.03%F.S	Safe overload	150%F.S
Hysteresis	0.03%F.S	Ultimate overload	200%F.S
Creep in 30 minutes	0.03%F.S	Excitation voltage	10~12V DC
Temperature effect span	0.02%F.S/10℃	Maximum excitation voltage	15V DC
Temperature effect zero	0.02%F.S/10℃	Insulation resistance	≥5000MΩ
Compensated temperature range	-10~+40℃	Environmental protection	IP68
Operating temperature range	-30~+70℃	Material	Alloy steels/Stainless steel